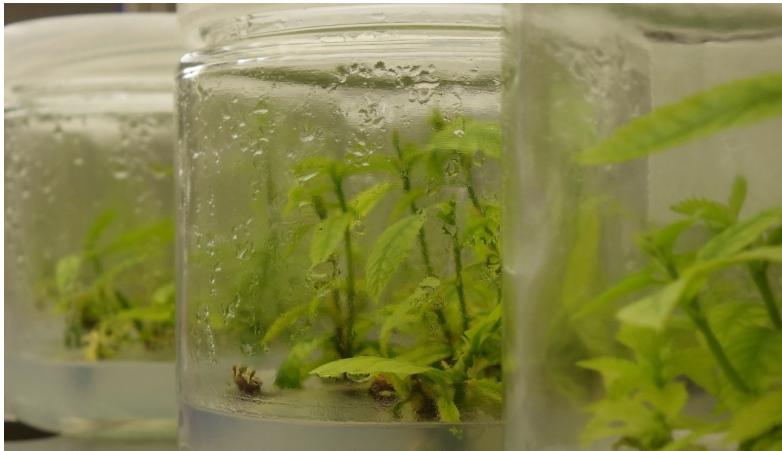


NEW FITOCLIMA 600

with vertical lights

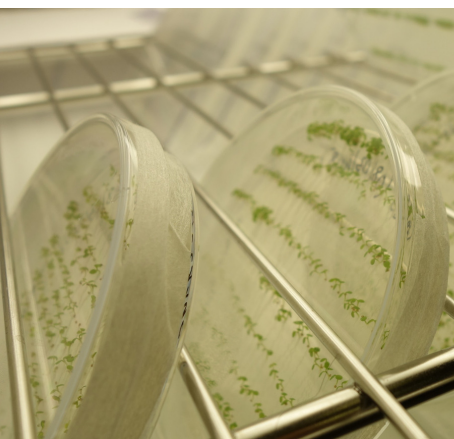


Suitable for

- Seed development and germination
- Insect rearing
- Algae growth in flasks
- Small plants
- Tissue culture

INCREASED GROWTH AREA & NEW LED LIGHTS

- It is possible to have more shelves vertically as a result of having lights on the sides
- Growth area with 5 wire shelves - 1,65m²
- Efficient climate control and stability of conditions
- Reduced operating costs



OTHER SPECS

- 5 wire shelves included as standard
- 8 white LED bars (4 in each side) with light intensity up to 300μmoles/m²/s-1
- Same environmental control as the standard FitoClima 600 PL/PLH

