



BIO

FITOCLIMA 600 & 1200 BIO



REACH-IN CHAMBERS FOR PLANT RESEARCH



FitoClima 600



FitoClima 1200 (optional double glazed door and high performance lights)





Common applications include:

Plant Growth
Tissue Culture
Arabidopsis
Germination
Algae Research
Entomology
Insect storage
Other life sciences applications

FitoClima Bio chambers provide the control and flexibility to meet the evolving needs of researchers and research requirements through time.



ARALAB

ARALAB is a company specialized in designing, developing, manufacturing and servicing of high quality climatic chambers and controlled environment rooms.

Since 1985 we have been perfecting ways to create and control temperature, humidity, light, pressure and many other environmental conditions.

Only the highest quality components are used to manufacture our chambers so customers can have the best equipment for their research and testing purposes.













Aralab. Your own climate.

KEY FEATURES





- Ready to use. No assembly needed
- Minimal footprint for efficient use of laboratory space
- Adaptive future proof design, with easily removable and height adjustable shelves and changeable light canopies with multiple intensities
- Research protection, with configurable high / low temperature and humidity alarms and automatic remote notifications
- Stainless steel interior for maximum resistance, easy cleaning and light uniformity near the edges
- Multiple lighting options to suite any research requirements and stages of plant development

TECHNICAL SPECIFICATIONS




TECHNICAL DATA FOR FITOCLIMA 600 & 1200 BIO CHAMBERS

	TEMPERATURE RANGE ^[1]	LIGHTS ON LIGHTS OFF	+5°C to +45°C -5°C to +45°C
	TEMPERATURE PRECISION		± 0,5°C
	TEMPERATURE UNIFORMITY		± 1,0°C
	HUMIDITY RANGE ^[1]	LIGHTS ON LIGHTS OFF	40 to 80% RH 40 to 90% RH
	HUMIDITY PRECISION		± 1% RH
	HUMIDITY UNIFORMITY		± 2% RH
	SHELVES / LIGHT BANKS ^[2]		FitoClima 600: 1 to 4 shelves with controlled lighting FitoClima 1.200: 2 to 8 shelves with controlled lighting
	GROWTH HEIGHT		Adjustable from 150mm up to 1.330 mm
	GROWTH AREA		0.33m ² per shelf (0.64cm x 0.52cm)
	LIGHTING TYPES AND INTENSITY ^[2a]	Maximum number of light shelves by light type:	
	Approximate intensity per shelf (±10%)	Light Type	FitoClima 600 FitoClima 1.200
	200 µmoles/m ² s (15.000 Lux)	4x18W fluorescent, dimmable	4 8
	400 µmoles /m ² s (30.000 Lux)	8x18W fluorescent, dimmable	2 4
	550 µmoles /m ² s (40.000 Lux)	4x55W PLL fluorescent, dimmable	2 4
	1.250 µmoles /m ² s (90.000 Lux) ^[2.b]	10x55W PLL fluorescent, dimmable	1 2
	LED with fixed wavelength	LED GreenPower, dimmable	3 6
	LED with adjustable wavelength	LED Flex, dimmable	1 2
	AIRFLOW		Uniform 0,2 m/s across the shelves. Adjustable by setpoint % at the touch-screen controller
	INTERNAL VOLUME		600 and 1.200 liters

INSTALLATION REQUIREMENTS

	WATER (FOR MODELS WITH HUMIDITY CONTROL)	Demineralized or R.O water. 1 to 5 bar pressure and ≤ 10µ siemens conductivity
	INSTALLATION PLACE AND DRAIN	Clean and airy place, with a room temperature between 10°C and 26°C. Drain at floor level and near the equipment
	WEIGHT OF EQUIPMENT	FitoClima 600: 175 Kg FitoClima 1.200: 250 Kg
	ELECTRICAL CONNECTION	1PH AC 230V ±10% 50Hz 5 to12A (depending on model)

FITOCLIMA MODELS REFERENCE – STANDARD CONTROLLED ENVIRONMENT VARIABLES

FITOCLIMA 600/1200 P		Temperature only
FITOCLIMA 600/1200 PL	 	Temperature and Light
FITOCLIMA 600/1200 PH	 	Temperature and Humidity
FITOCLIMA 600/1200 PLH	  	Temperature, Light and Humidity
FITOCLIMA 600 PDH	 	Temperature and Low Humidity (ambient down to 5% RH)

[1] Temperature and humidity ranges with all lights ON (5°C and 80%RH) are affected by chosen light configuration and configured light intensity. Due to heat dissipation from the lamps, high light intensities will affect high humidity and low temperature ranges

[2] Standard included light configuration: 4x18W fluorescent on each shelf. 3 light shelves on the FitoClima 600 and 6 on the FitoClima 1.200

[2a] Measurements at 150mm from lamps at 25°C. At lower temperatures light intensities will decrease

[2b] Intensity available with "High Performance lighting (1.250 µE/m²s) kit" as an option

DIMENSIONS AND DRAWINGS

FITOCLIMA 600



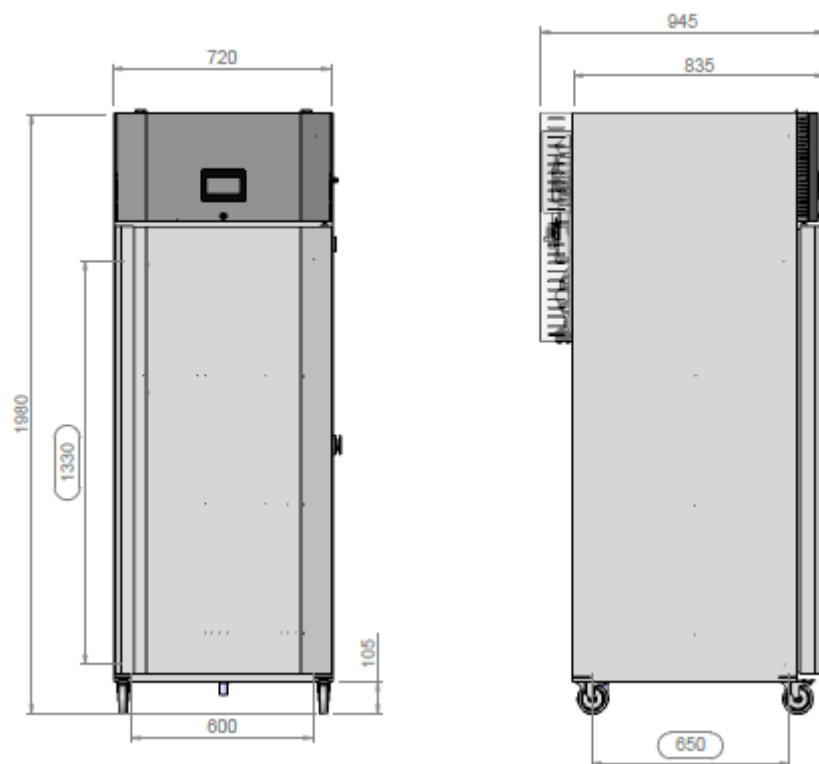
EXTERNAL DIMENSIONS
(HxWxD) (mm)

1.980 x 720 x 945



INTERNAL DIMENSIONS
(HxWxD) (mm)

1.330 x 600 x 650



FITOCLIMA 1.200



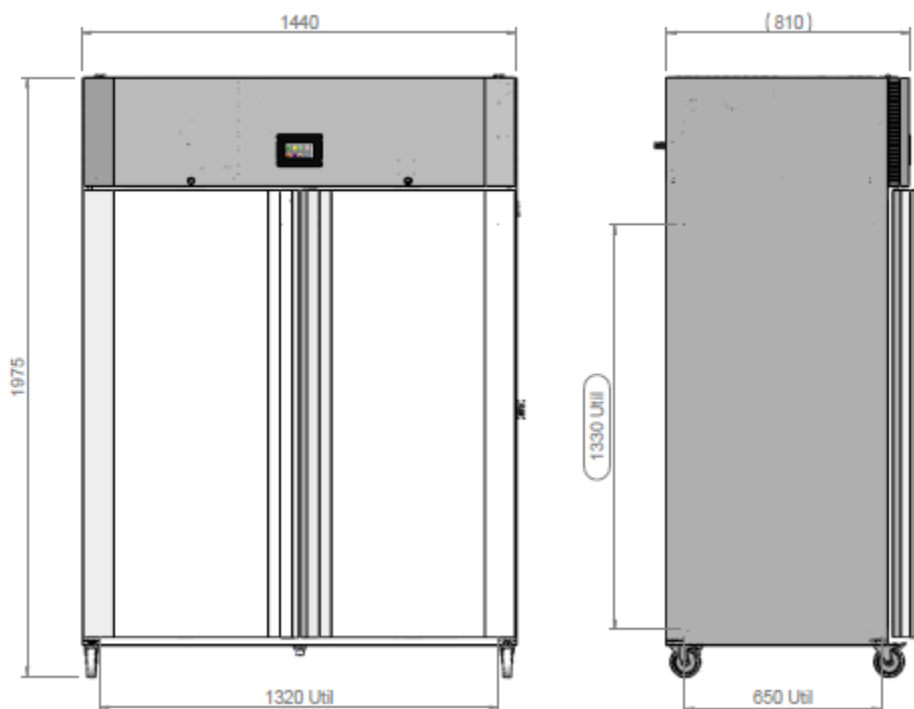
EXTERNAL DIMENSIONS
(HxWxD) (mm)

1.975 x 1.440 x 810



INTERNAL DIMENSIONS
(HxWxD) (mm)

1.330 x 1.320 x 650



EQUIPMENT DESCRIPTION

CONSTRUCTION

- Highly resistant stainless steel in the interior and exterior
- Polyurethane insulation
- Front panel with zincor steel and gray epoxy paint
- Pivoting door(s) with spring lock, magnetic gasket and safety lock(s)
- 4 or 6 casters with built in brakes for effortless mobility and control
- 35mm diameter entry port
- New generation multi-color touch-screen ClimaPlus© controller
- Open door alarm with configurable time-out function
- Free slots for connecting and integrating external devices (CO2 and/or O2 control, Auto Irrigation, Radiometers and many other) on the ClimaPlus controller
- Accessible technical compartment for faster maintenance procedures



CLIMATIC CONTROL

- Air based, CFC free, mechanical refrigeration by sealed condenser group
- Dual heating technology with hot gas by-pass and stainless steel electric heaters
- Humidification by ultrasonic generator with automatic water level control and self-cleaning function
- Dehumidification by condensation on the cooling system evaporator
- PT100 Class A temperature sensor and capacitive humidity sensor



AIR FLOW

- Dynamic airflow with EC (variable) blower
- Air renovation through adjustable lateral port-holes
- Uniform air velocity of 0.2 meters per second across shelves
- Optional Airflow velocity adjustable at the ClimaPlus© controller



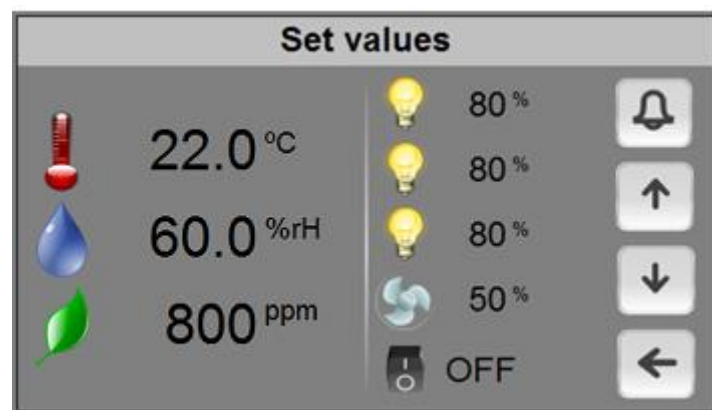
RESEARCH PROTECTION AND SECURITY

- Independent thermostats for maximum and minimum temperature limits
- Automatic cut-off function, in case of excessive heating or cooling
- Configurable maximum and minimum temperature and humidity limits
- Visual and audible alarms for temperature and humidity band limits



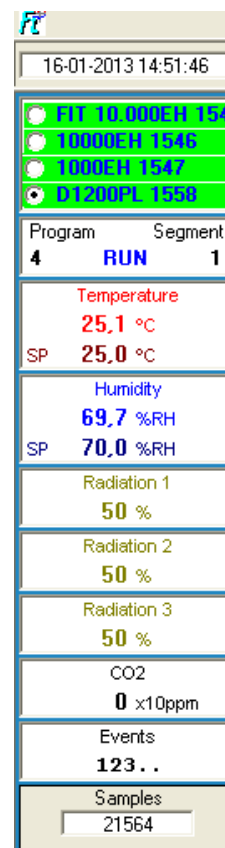
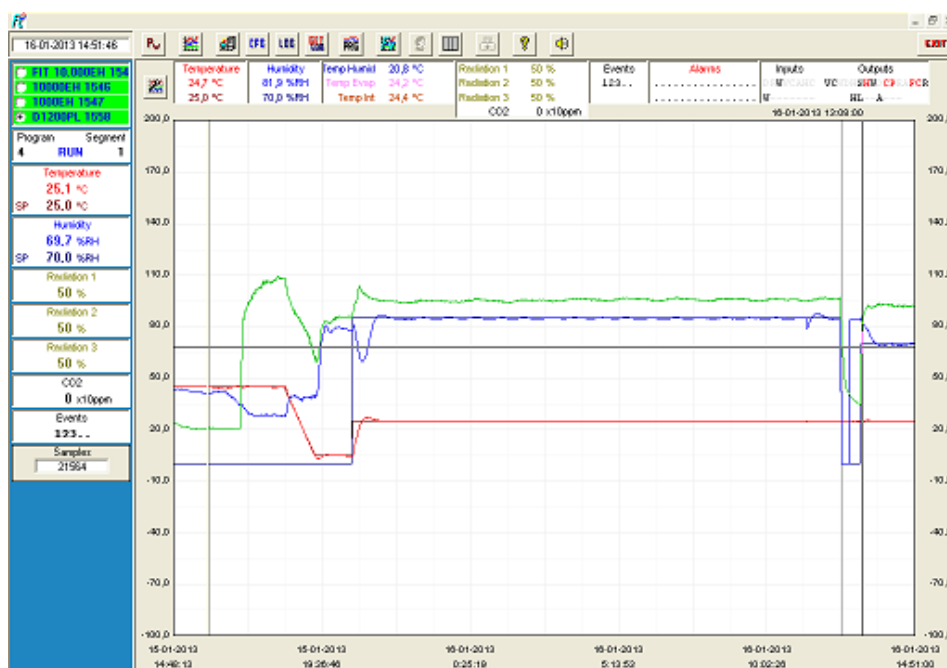
CLIMAPLUS CONTROLLER

- Programmable Logic Controller exclusively developed by Aralab for FitoClima chambers
- Easy to use touch-screen interface
- 168mm x 112mm multicolor display
- Controls every environmental variable available for any specific FitoClima model (Temperature, Humidity, Lights, Airflow, CO₂, O₂ and connected external devices)
- Friendly program editor for creating 32 programs of 24 segments each, allowing the design of complex and comprehensive climatic simulation programs
- Password protection of the controller functions
- Content and research protection feature, with configurable High and Low Temperature and Humidity alarms and automatic notifications
- Managing, monitoring and recording of all alarms
- Non-volatile memory, allowing the automatic restart of previously defined set-points or on-going programs due to power failure, without losing data
- Real-time monitoring of all the functions and active components of the equipment, allowing for a fast and accurate diagnostic in case of malfunction
- Possibility to control and program events by external commands and with external devices
- Graphical view of programs and climatic variables
- RS232/485, Ethernet and Wi-Fi for connecting computers to the controller
- ClimaPlus controller functions also available at the PC/Laptop with the FitoLog software pack

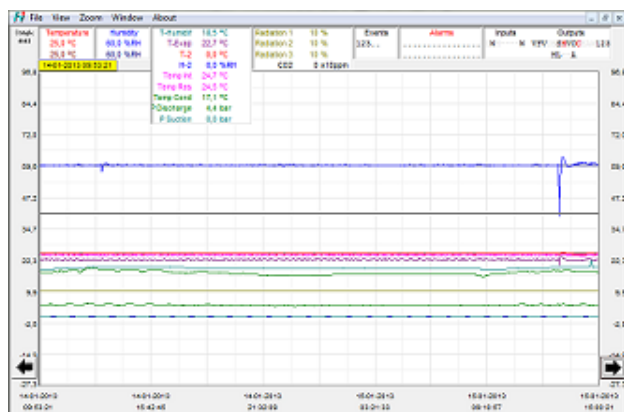


FITOLOG SOFTWARE

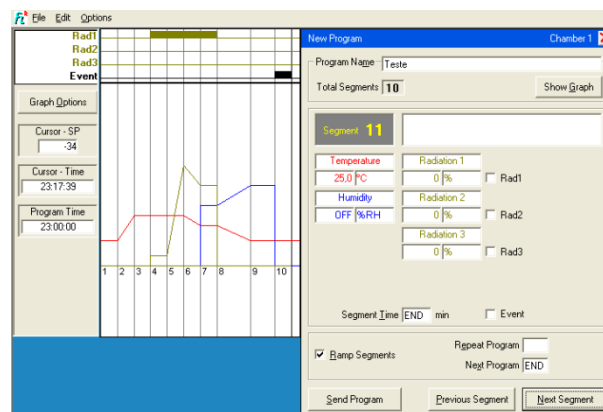
The FitoLog software pack is a set of applications designed to facilitate the managing, monitoring and recording of programs and data from the FitoClima chambers. It consists of 3 applications: **FitoLog**, **FitoLogView** and **FitoProgram**.



FitoLog: Records and displays in real time all data and details related to the set-points, running variables and equipment behaviour. It also retrieves information about the active components of the chamber, running processes, errors, alarms and allows the configuration of periodic or alarm triggered remote notifications (by email or SMS, depending on existing connections and accessories).



FitoLogView: It is a working tool to process the data recorded by the FitoLog program. One can view, print and export the log contents to other file types, and analyse the data in other data management software (Excel, Star Office, Access or others).



FitoProgram: This application simplifies the creation of programs and its integration on the chamber ClimaPlus controller. Up to 32 programs, each with 24 segments, can be designed and linked to create detailed environmental profiles and simulations.

Research secured with alarms, notifications, fast diagnostics and prompt troubleshooting: With **FitoLog** it is possible to gather data from each of the chambers systems, which makes it a very useful tool to diagnose any necessary maintenance. This tool works as the “black box” of the equipment, giving Aralab technicians the necessary data to remotely carry out a fast and efficient diagnostic. All that is needed is a FitoLog file.

COMMON ACCESSORIES (PLEASE CONSULT ARALAB FOR OTHER ITEMS)

- FitoLog® software pack for PC/Laptops, enabling data monitoring, logging and managing operations directly on a computer
- Ethernet / Wi-Fi and other connections
- CO2 monitor and controlling units
- Variable air flow
- Dew and Mist simulation
- Automatic irrigation
- Aeration kit for Algae Research and Hydroponic cultures
- External water tank with electric pump and security valve
- Quantum Light meter integrated with the controller for managing light intensities in $\mu\text{moles}/\text{m}^2\text{s}$
- Double glazed glass doors
- Phenolic resins coating for Entomology/Insects applications
- Additional stainless steel wire shelves
- High performance lighting kit (1.250 $\mu\text{moles}/\text{m}^2\text{s}$) with heat extraction system
- LED modules with fixed spectral distribution
- LED modules with configurable spectral distribution



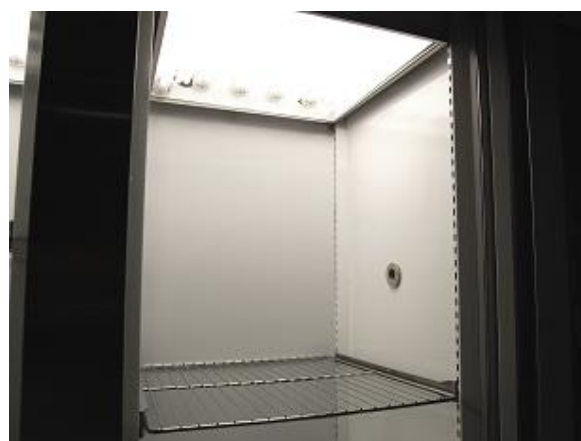
Standard 4x18W fluorescent light



Optional LED GreenPower (Available in Blue/White/Red/Far-Red)



Optional LED Flex with configurable spectral distribution



Optional High Performance kit with heat extraction system

SOME EXAMPLES OF INTERIOR CONFIGURATIONS

(CUSTOMER SPECIFICATIONS AND ACCESSORIES MAY RESULT IN DIFFERENT PRODUCT IMAGES)

FitoClima 600 P/PH (no light control)



FitoClima 600 PL/PLH with 2, 3 and 4 shelves and standard performance lights



FitoClima 1200 PL/PLH with 4 high performance light



FitoClima 1200 PL/PLH with "Low Temp + High performance" kit



FitoClima chambers provide maximum flexibility to meet the evolving needs of research requirements.

Light banks can be easily removed or changed by new ones with different intensities; similarly, shelves can be effortlessly removed or re-adjusted in height so that both short and tall plants can be fitted inside.

Features and specifications are subject to change. Aralab continuously studies ways to further develop its products to achieve better performances and overall product quality. As a result, characteristics and specifications provided in this document may be subject to changes.

YOUR OWN CLIMATE
Our main goal

Let's meet!
aralab@aralab.pt
www.aralab.pt
T: +351 219 154 960